

The Board of County Supervisors of Albemarle County, Virginia, in regular meeting on the 5th day of February, 2025, adopted the following resolution:

R E S O L U T I O N

WHEREAS, the street(s) in **Dunlora Park Phase 1 Subdivision**, as described on the attached Additions Form AM-4.3 dated **February 5th, 2025**, fully incorporated herein by reference, is shown on plats recorded in the Clerk's Office of the Circuit Court of Albemarle County, Virginia; and

WHEREAS, the Resident Engineer for the Virginia Department of Transportation has advised the Board that the street(s) meet the requirements established by the Subdivision Street Requirements of the Virginia Department of Transportation.

NOW, THEREFORE, BE IT RESOLVED, that the Albemarle Board of County Supervisors requests the Virginia Department of Transportation to add the street(s) in **Dunlora Park Phase 1 Subdivision**, as described on the attached Additions Form AM-4.3 dated **February 5th, 2025**, to the secondary system of state highways, pursuant to §33.2-705, Code of Virginia, and the Department's Subdivision Street Requirements; and

BE IT FURTHER RESOLVED that the Board guarantees a clear and unrestricted right-of-way, as described, exclusive of any necessary easements for cuts, fills and drainage as described on the recorded plats; and

FURTHER RESOLVED that a certified copy of this resolution be forwarded to the Resident Engineer for the Virginia Department of Transportation.

* * * * *

Recorded vote:

Moved by:

Seconded by:

Yeas:

Nays:

Absent:

A Copy Teste:

Claudette K. Borgersen, Clerk
Board of County Supervisors



COMMONWEALTH OF VIRGINIA DEPARTMENT OF TRANSPORTATION
Form AM 4.3

In Albemarle County

by Resolution of the governing body adopted 2/5/2025

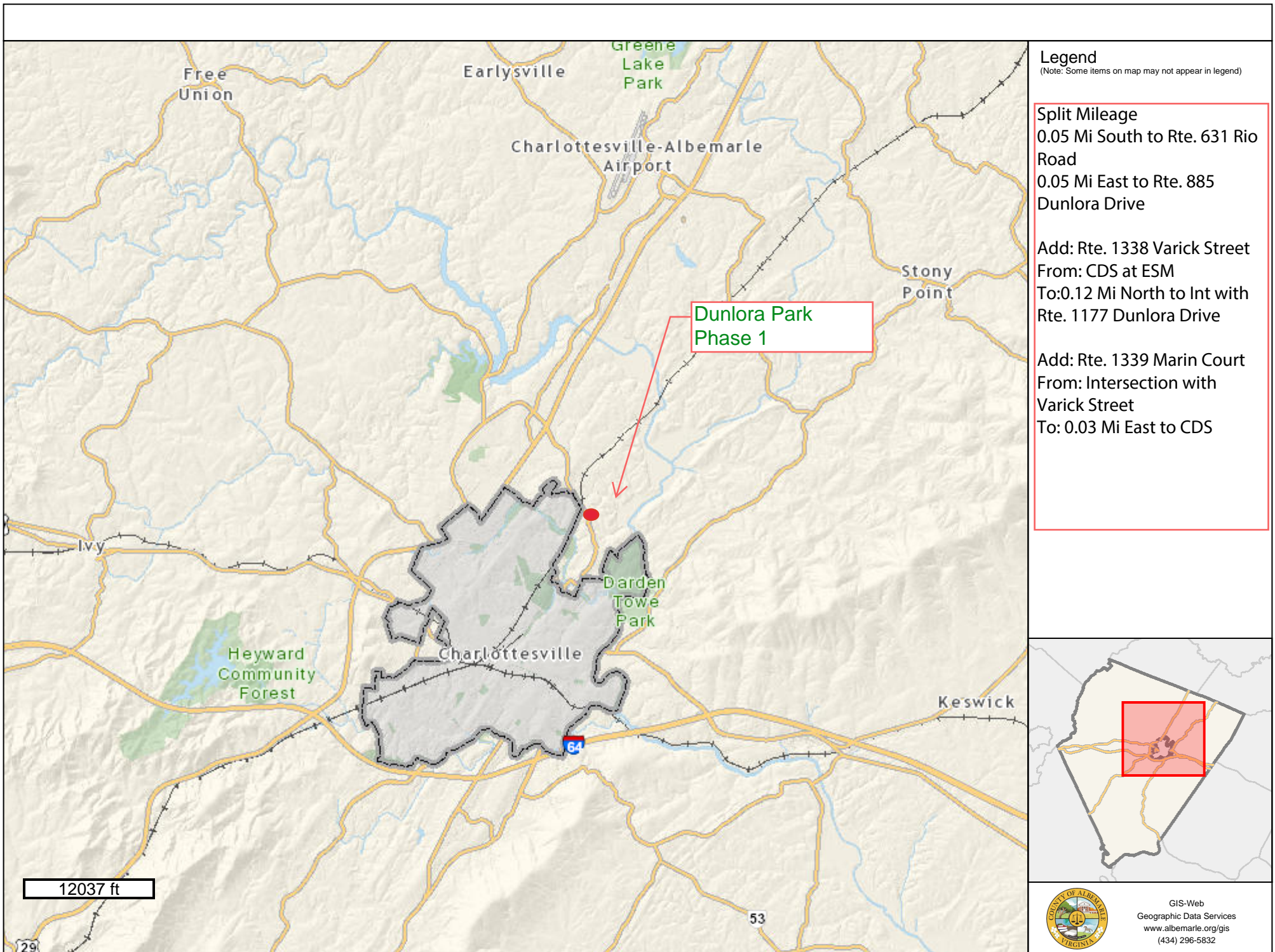
The following VDOT Form AM-4.3 is hereby attached and incorporated as part of the governing body's resolution for changes to the secondary system of state highways.

A Copy Testee Signed (County Official): _____

Report of Changes in the Secondary System of State Highways

Project/Subdivision: **Dunlora Park Phase 1**

CHANGE TYPE	RTE NUM & STREET NAME	CHANGE DESCRIPTION	FROM TERMINI	TO TERMINI	LENGTH	NUMBER OF LANES	RECORDATION REFERENCE	ROW WIDTH
Addition	Rt. 1338 - Varick Street	New subdivision street §33.2-705	ESM/CDS	619' North to Dunlora Drive Rte. 1177	0.12	2	Inst 200200005149	54
Addition	Rt. 1339 - Marin Court	New subdivision street §33.2-705	Int with Varick Street East 170'	CDS	0.03	2	Inst 202200005149	54

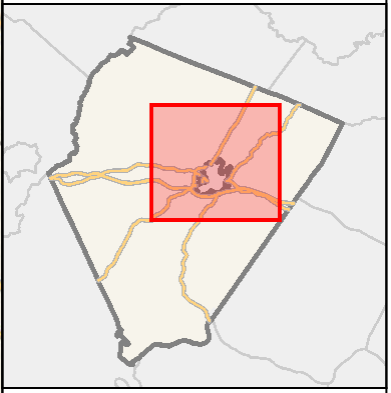


Legend
 (Note: Some items on map may not appear in legend)

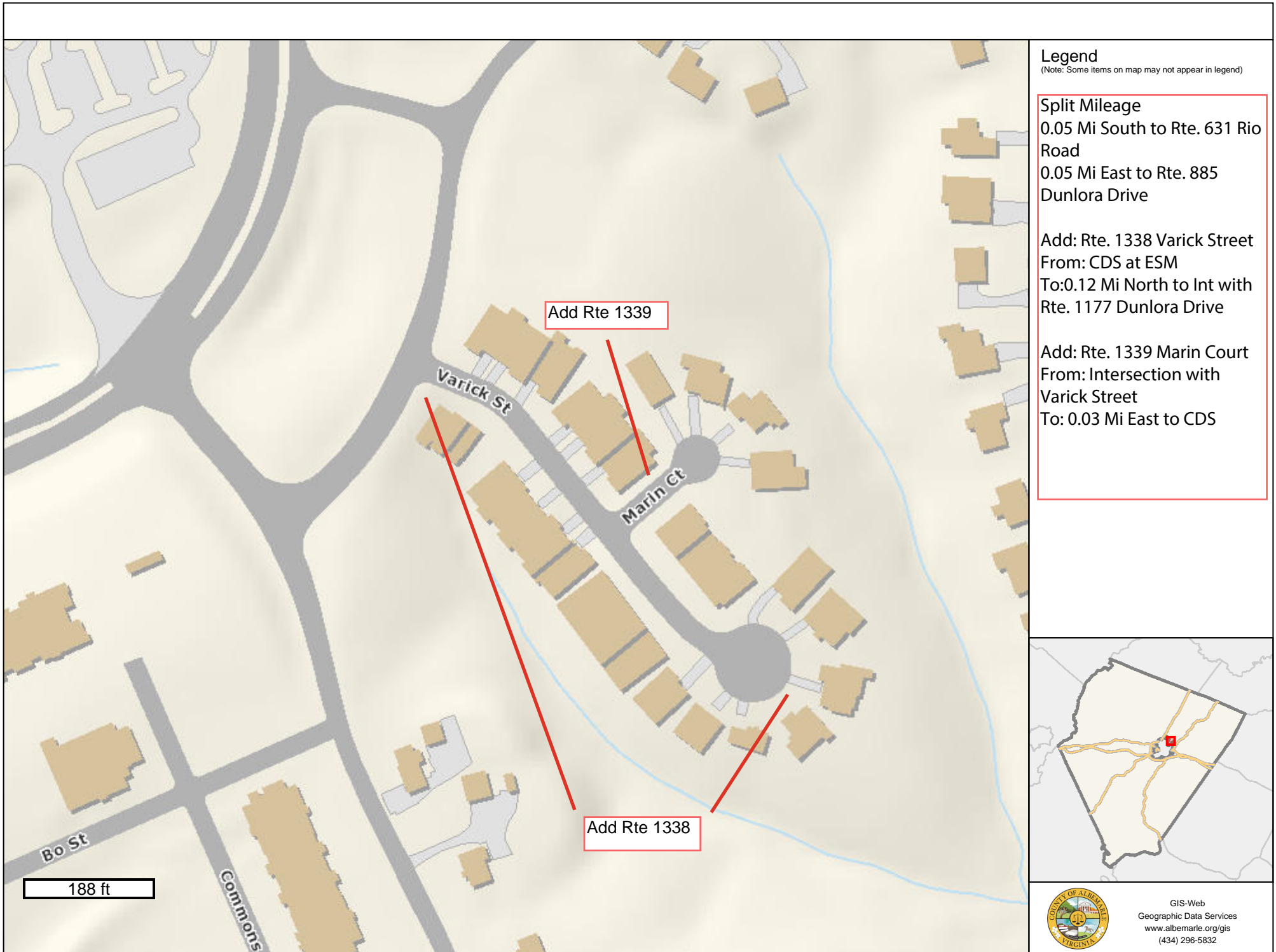
Split Mileage
 0.05 Mi South to Rte. 631 Rio Road
 0.05 Mi East to Rte. 885 Dunlora Drive

Add: Rte. 1338 Varick Street
 From: CDS at ESM
 To: 0.12 Mi North to Int with Rte. 1177 Dunlora Drive

Add: Rte. 1339 Marin Court
 From: Intersection with Varick Street
 To: 0.03 Mi East to CDS




 GIS-Web
 Geographic Data Services
www.albemarle.org/gis
 (434) 296-5832



Legend
 (Note: Some items on map may not appear in legend)

- Split Mileage**
 0.05 Mi South to Rte. 631 Rio Road
 0.05 Mi East to Rte. 885 Dunlora Drive
- Add: Rte. 1338 Varick Street**
 From: CDS at ESM
 To: 0.12 Mi North to Int with Rte. 1177 Dunlora Drive
- Add: Rte. 1339 Marin Court**
 From: Intersection with Varick Street
 To: 0.03 Mi East to CDS

